

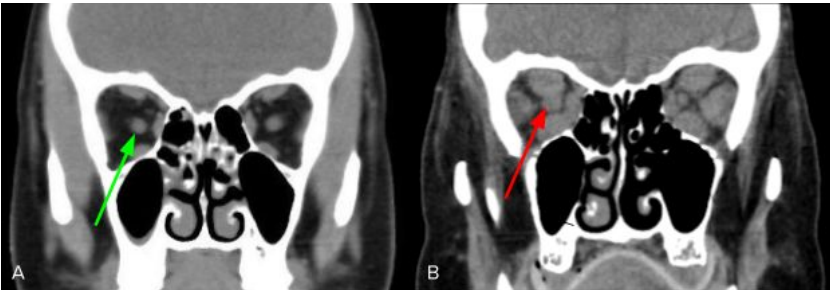


Quick Facts About Thyroid Eye Disease

What Is Thyroid Eye Disease?



Courtesy of the American Academy of Ophthalmology and Dr. Steven A. Newman, M.D.



A. CT scan of normal eye sockets Modified from [Radiopaedia.org](https://radiopaedia.org). Case courtesy of Dr. Dalia Ibrahim. [rID: 44049](https://pubmed.ncbi.nlm.nih.gov/44049/). Green arrow points to optic nerve. B. CT scan of thyroid eye disease. Red arrow points to optic nerve surrounded by enlarged muscles (large gray ovals). Courtesy of Dr. Nagham Al-Zubidi.

- Thyroid eye disease (TED) is an autoimmune disease causing inflammation in the muscles and fat behind the eyes
- Thyroid levels may be low, high or normal
- Early treatment is important during the active phase

What Should I Do About Thyroid Eye Disease?

How Can Thyroid Eye Disease Affect Me?

- Blurred vision from dry eye, or rarely, the optic nerve can be injured
 - Double vision from restricted or weakened muscles
 - Change in appearance due to bulging eyes, redness, swelling and/or eyelid retraction
- A **neuro-ophthalmologist** checks your vision, eye movements and eyelids
 - If you are a smoker, stop smoking
 - Treatments may include medications, surgery, prism glasses, or radiation, depending on severity and types of eye-related problems

<https://www.nanosweb.org/thyroideyedisease>

