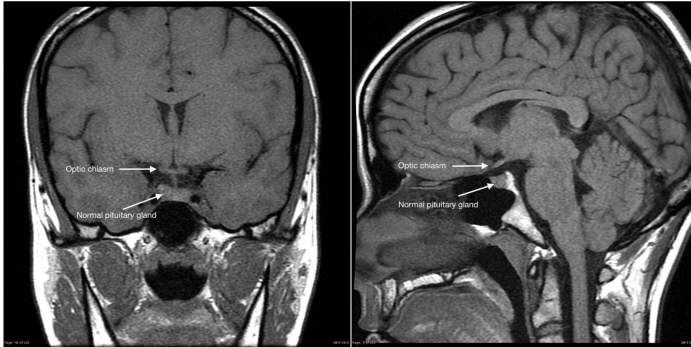




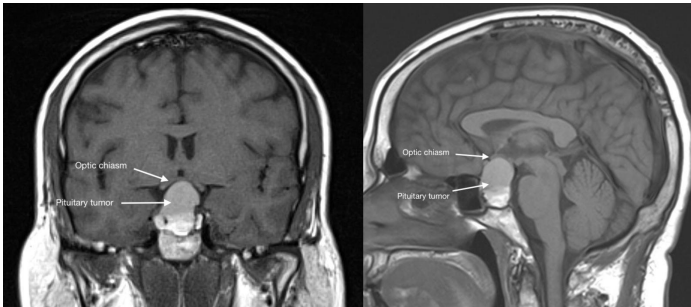
Quick Facts About Pituitary Tumors

What Is a Pituitary Tumor?

Normal



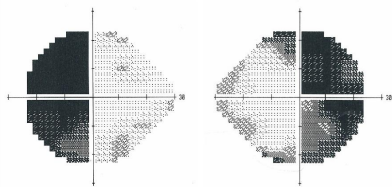
Tumor



Top: Modified from Radiopaedia.org. Case courtesy of Dr. Frank Gaillard. [rID: 17529](https://pubs.rsna.org/lookup/doi/10.1148/radiopaedia.r17529).

- The pituitary gland is a small gland inside the brain and above the nasal passages
- Pituitary tumors are an abnormal overgrowth of the normal pituitary gland.
- Some tumors are small (**microadenomas**), others are large (**macroadenomas**)
- Most pituitary tumors are **benign**.

How Can a Pituitary Tumor Affect Me?



- **Some pituitary tumors do not cause any problems.**
- Pituitary tumors may affect **peripheral vision** (above).
- Pituitary tumors can make extra hormones and cause **hormone imbalances**.

What Should I Do About a Pituitary Tumor?

- An **ophthalmologist** or **neuro-ophthalmologist** checks your visual acuity, color vision visual fields and structure of your optic nerve.
- An **endocrinologist** checks your hormone levels.
- A **neurologist** may need to treat your headaches.
- A **neurosurgeon** may need to perform surgery to remove part of the tumor.

<https://www.nanosweb.org/pituitarytumor>

