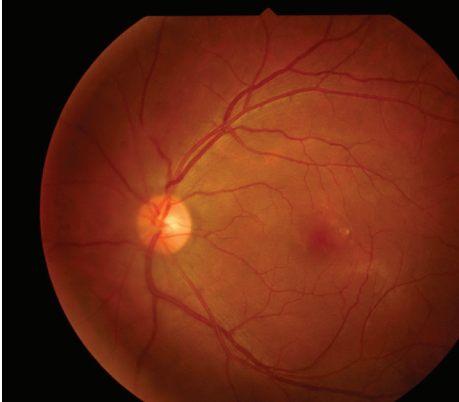




# Now Hiring Neuro-Ophthalmologist

Washington University Ophthalmology and Visual Sciences is seeking an innovative and motivated individual to join our practice as a Neuro-Ophthalmologist

- Full-time academic appointment
- Patient care, Research and Resident education



## The qualified applicant will demonstrate:

- Excellence in clinical care
- Clinical management experience
- Outstanding teaching skills

Board certification or eligibility in Ophthalmology or Neurology is required.

Please upload CV and cover letter to job listing at [facultyopportunities.wustl.edu](http://facultyopportunities.wustl.edu).

For more information, contact:  
Todd Margolis, MD, PhD, *Chairman*  
314-362-3315  
[margolist@wustl.edu](mailto:margolist@wustl.edu)



The mission of Washington University School of Medicine is to lead in advancing human health through the best clinical care, innovative research and the education of tomorrow's leaders in biomedicine in a culture that supports diversity, inclusion, critical thinking and creativity. The clinical practice attracts patients from the St. Louis area and beyond. As a regional referral center, our specialists evaluate and treat a diverse population. Experts from every area of medicine interact in a supportive, cooperative environment. The Department of Ophthalmology and Visual Sciences collaborates with other specialties, offering care for patients with any eye condition. Research opportunities is emphasized and encouraged.

Washington University Physicians is one of the largest clinical faculty practices in the nation. Barnes-Jewish and St. Louis Children's hospitals are the School of Medicine's affiliate teaching hospitals, both staffed exclusively by faculty physicians. Barnes-Jewish Hospital is the largest hospital in Missouri with 1,365 licensed beds. Specialty services are provided at 47 clinical sites.



 **Washington**  
University in St. Louis  
SCHOOL OF MEDICINE

[medicine.wustl.edu](http://medicine.wustl.edu)